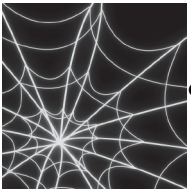


Winter Adaptations
 Adaptable for Grades: K - 4
 Students will learn about the adaptations many animals have to help them survive harsh Wisconsin Winters. They will discover how and why animals make insulating shelters, store food, hibernate and migrate in order to live. Come experience winter education in a whole new way with this guided interpretive program.
 Time: 1.5 hours

Web of Wonder
 Adaptable for Grades: K-8
 Students learn how all living things in an ecosystem are connected in some way. By building their own "web" your class will be able to look at energy flow through the food web system and how environmental changes disrupt the system. This program can be conducted at Horicon Marsh, or right in your own classroom.
 Time: 30 minutes



Tricky Tracks
 Adaptable for Grades: 2 - 8
 Mud and snow are fantastic places to find signs of those animals we don't always see. In this program, your class will learn how to identify the tracks of some common Wisconsin animals. Finish up the program by making a plaster cast of a track to take home. In winter months, when snow is on the ground, your class can go on an adventure as they identify tracks and discover activity signs left behind by Horicon's resident wildlife.
 Time: 1-2 hours



Pond Study
 Adaptable for Grades: PreK-8
 Students use a hands-on approach to explore the world beneath the water. Examining the creatures they catch, your class will learn about the adaptations these animals have that allow them to survive in this harsh environment.
 Time: 1 - 1 1/2 hours

Mammals of Wisconsin
 Adaptable for Grades: K - 8
 Explore the exciting world of mammals as your class learns the identities of some Wisconsin native residents. By looking at their adaptations, students learn how they survive in a state with a wide array of temperatures and ecosystems. This program can be conducted at Horicon Marsh, or right in your own classroom.
 Time: 30-45 minutes



Intro to Insects
 Adaptable for Grades: PreK - 8
 What makes an insect? With sampling nets in hand, catch insects around the marsh. Compare insect behaviors and adaptations, and discover how these creatures survive as well as play an important role in the food chain.
 Time: 1 hour

Hunt for Habitats
 Adaptable for Grades: K-8
 What is a habitat? After a quick review of what components make up a habitat, Wildlife Educators will take your class on a hike around the education center to find out what animals live in the marsh. Learn how everyone co-exists in this relatively small place and still manage to raise a family.
 Time: 45 min-1 hour



Birding Basics
 Adaptable for Grades: 4-12
 Your class can learn a great new skill while enjoying the great outdoors. The program begins with an introduction on how to identify birds by sight and sound. After a quick lesson on binocular use, they're off! This tour takes place in Horicon Marsh where your students can practice what they learned on the area's resident and migratory birds.
 Time: 1 hour

Avian Adaptations
 Adaptable for Grades: 1-6
 When an owl eats its prey whole, where does it go? How does a hawk track rodents through tall grass? Learn the answer to these question and more when your class examines the different ways birds deal with everyday life, whether through adaptation or behavior. This program is available at Horicon Marsh or in your own classroom.
 Time: 1 hour

Program Information

The Wisconsin Department of Natural Resources' Horicon Marsh Wildlife Conservation Education Program offers a fun and exciting way for your class to explore the worlds of science and environmental education while meeting state academic standards.

All of the programs listed can be adapted to different age levels. We will also customize a program to your class's specific needs. Please notify us at least one month in advance.

Registration

Wildlife Educators are available for programs during regular office hours:
Monday-Friday: 8:30 a.m.-4:00 p.m.

If these hours don't suit your needs, please call us for alternatives.

Program Fees

All of our wildlife education programs are offered to you free of charge. Our salaries, supplies, and program services are paid by the license fees that DNR collects from Wisconsin's hunters and anglers. **Donations are accepted and VERY MUCH appreciated!**

Public Events

For a detailed list of Horicon special events please visit the Friends website at www.horiconmarsh.org or call 920-387-7893.



Contact Information

Wildlife Education Program

N7728 Hwy 28
 Horicon, WI 53032
 (920) 387-7893



Wisconsin Dept. of Natural Resources
 Bureau of Wildlife Management
dnr.wi.gov keyword search Horicon

The Wisconsin Department of Natural Resources provides equal opportunity in its employment, programs, services, and functions under an Affirmative Action Plan. If you have any questions, please write to Equal Opportunity Office, Department of Interior, Washington, D.C. 20240. This publication can be made available in alternative formats upon request. Please call 920-387-7893 for more information.



Federal Aid Project
 funded by your purchase of
 hunting equipment



Printed on
 Recycled
 Paper

WM-556-2014

Horicon Marsh State Wildlife Area Wildlife Conservation Education Programs



Animal Habitats and their Management

Adaptable for Grades: 5-12

How is it possible for a large number of animals to co-exist in a small space? After a quick review of what components need to be present for quality habitat, our Educators will take you on a hike around the education center to find out what animals reside in Horicon Marsh. Through discussion, your class will learn how Wildlife Managers work with the land so everyone can co-exist together in this relatively small place.

Time: 1 - 1 ½ hours.

Exploring the World of Ice & Snow

Adaptable for Grades: 5-12

Take a guided interpretive hike on the frozen marsh with snowshoes. Learn the history of snowshoeing in Wisconsin. Gain an understanding of the value many cultures placed on snowshoes to survive harsh winters. Discover walking techniques and the structure of snowshoes and how to dress appropriately for any winter outdoor activity. **Time: 1 - 1 ½ hours.**



History of Horicon

Adaptable for Grades: 5-12

Through a PowerPoint of historic photographs, learn the fascinating story of how, over time, Horicon Marsh was completely destroyed and then painstakingly re-built to its present condition. Through this program, students will study the impacts of people and their developments on an ecosystem both past, and present. **Time: 30 - 45 minutes**

Wildlife Olympics (3-8)

Every four years the world gets to witness the Olympics. Join us to learn about some of the different athletes right outside your window. Who is the fastest in the world? Who can jump the farthest? Who has the best sense of smell? See which animal athletes will take home the gold in the Wildlife Olympics! *Outdoor and indoor versions available.

Birds By Color (PreK-3)

Birds can add a lot of color and fun to backyards. Learn what makes a bird different from other creatures and make your own binoculars to spot many colorful birds!

Critter Camo (PreK-2)

While participating in challenging games students will discover some of the amazing adaptations that animals have which help them survive.

C.S.I. (K-12)

Calling all animal detectives...Help investigate the clues that animals leave behind. Tracks, scat, feathers, fur, and lots of other evidence found at a "critter-scene" can be revealing and helpful. Can you crack the case?



Discovery Hike (PreK-12)

Students will get an overview of interactions within the marsh community. They will discover the wonders of nature that can only be experienced when they use all their senses to explore.

Laws of Nature (K-8)

Students will discover the 4 laws that govern nature through various fun and active ecology games. From there is no such thing as a free lunch to everything must go somewhere students will have the chance to act out the 4 laws.

Horicon Marsh Amateur Tracker

Adaptable for Grades: 5-12

Hike into the ice-covered marsh by foot or snowshoe (snow permitting). Investigate how different plants and animals use adaptations to survive winter in an icy marsh. Search through the cattails for tracks and other signs or clues left by winter wildlife. Make a plaster cast in the classroom to take home.

Time: 1 - 1 ½ hours.

Dabblers and Divers: Wisconsin Waterfowl

Adaptable for Grades 7-12

Wisconsin is home to more than 20 different species of ducks. Through the use of taxidermy specimens and a habitat hike, students will come to understand Wisconsin's waterfowl and their management.

Time: 30 - 45 minutes

Managing our Wildlife

Adaptable for Grades 5-12

Nature has always taken care of our wildlife. So why do we need to do so today and how is this accomplished? Walking among grassland, wetland and woodland habitats, students will learn what wildlife management is and how it is being applied at Horicon Marsh and other similar areas. **Time: 30 - 45 minutes**

Geocaching

Adaptable for Grades 7-12

Explore the world of geocaching. Learn how to use a GPS and the proper techniques for hunting down a cache. **Time: 60 - 90 minutes**

Monitoring Aquatic Ecosystems

Adaptable for grade 9-12

By testing a series of physical, chemical and biological parameters of Horicon Marsh students will learn to appreciate the foundation of life in a wetland, their interactions and methods for studying these.

Time: 1 - 1 ½ hours.



Muskrats, Mink and other Marsh Mammals

Adaptable for Grades 5-12

Due to their secretive nature, mammals are rarely observed in the wild. By examining mammal pelts students will explore their life histories, distribution, population dynamics, wildlife survey methods and management.

Time: 30 - 45 minutes

Horicon Marsh on DVD

The Friends of Horicon Marsh in collaboration with Wisconsin DNR have created "The Horicon Marsh Story." This 20-minute film highlights the history, wildlife, wildlife management and recreational opportunities at Horicon Marsh. If you are interested in viewing the film during your field trip as an introduction to the marsh, please inform a wildlife educator.

Horicon Marsh Explorium

Schools groups are encouraged to experience new hands on, interactive exhibits that tell the story of Horicon Marsh. Walk through a glacier, crawl through a muskrat hut or drive an airboat simulator!

Fees: Group rate of \$2 per person

The Education Center is open to the public year round;

Weekdays: 9 a.m. - 5 p.m.

Weekends: 10 a.m. - 5 p.m.

Interpretive Trunks

You and your class can begin exploring the world of wildlife by checking out and opening up three wildlife education trunks:

**Wisconsin Mammals Trunk
World of the Whitetail
Whooping Crane Trunk**

Trunks come complete with skulls, bones, hides, tracks, and a complete curriculum. Call today to reserve your trunk for a two-week period with your class.



Mammal Mania (PreK-K)

Do you know what makes a mammal so unique? This program will explore mammals that live in the wild and near our homes. Play a game and use your imagination as we discover mammals.

Migration Challenge (1-8)

Through interactive games students will explore the effective migration strategies that waterfowl use and what struggles they encounter during both spring and fall migration.

Scatology(5-12)

It's kinda gross and smelly but it is a great way to see who is living in the marsh. Students will learn how to properly identify common animal scat. This is a great tracking skill that is sure to impress.

Slippery, Slimy, Scaly(K-8)

Often overlooked, reptiles and amphibians play an essential role in the marsh ecosystem. Students will have chance to learn about these amazing creatures and examine them in their natural habitats.

Wetland Sort (PreK-K)

Many creatures call wetlands home. Discover what makes these creatures so unique. Be prepared to get your hands wet!

Wonders of Wetlands (K-8)

While enjoying a hike through the marsh students will learn about the many important functions of wetlands.